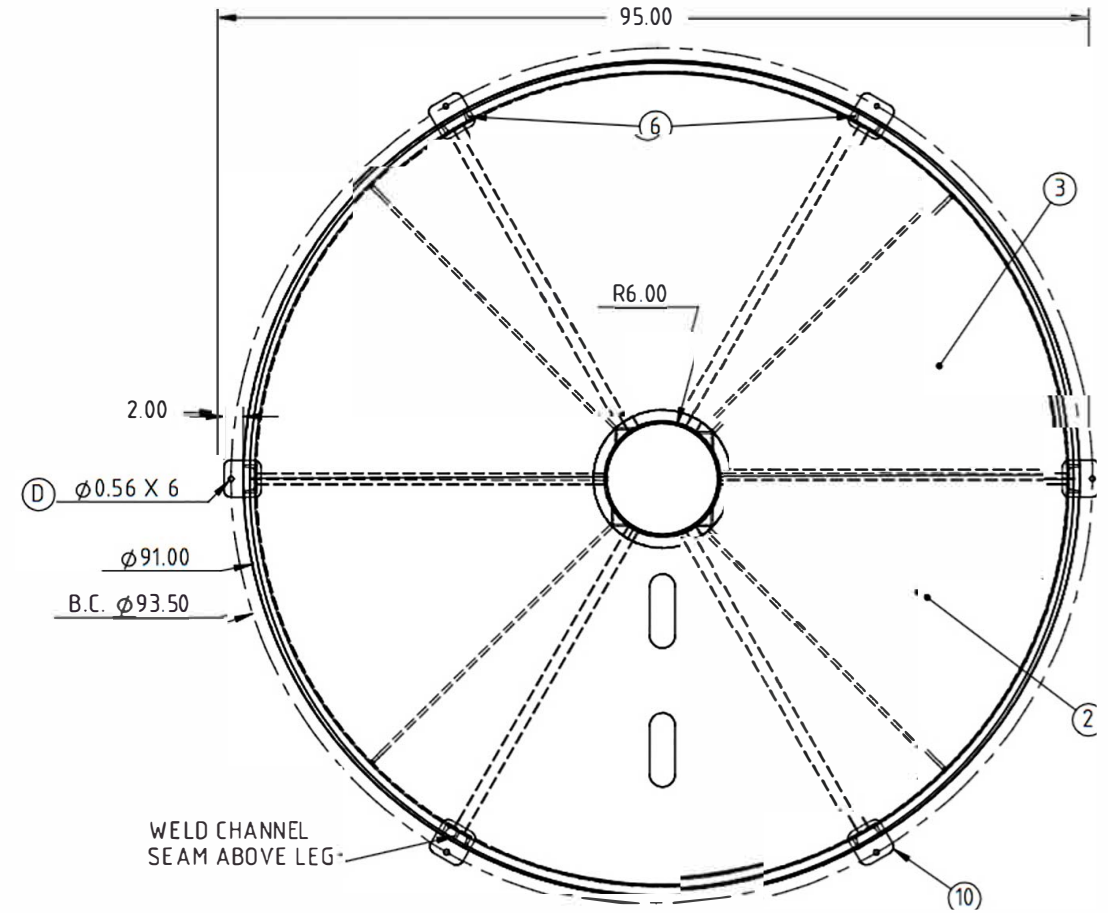
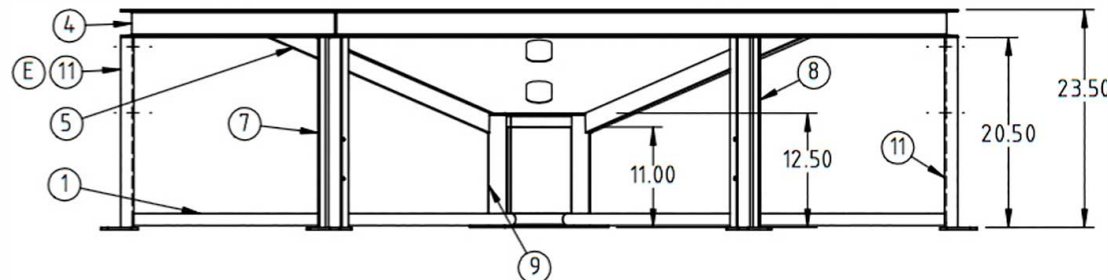


GO BACK

ST90-15-STEEL E

KEY	PART NUMBER	DESCRIPTION	QTY.	(E)
1	CB090-15ST-1	CENTER TO LEG PIPE	6	
2	CB090-15ST-2	1/2 CONE (HOLES)	1	
3	CB090-15ST-3	1/2 CONE	1	
4	CB090-15ST-4	CHANNEL RING	1	
5	CB090-15ST-5	CONE SUPPORT STRAP	4	(D)
6	CB090-15ST-6	CHANNEL LEG	2	(D)
7	CB090-15ST-7	CHANNEL LEG (RIGHT)	1	(D)
8	CB090-15ST-8	CHANNEL LEG (LEFT)	1	(D)
9	12521	CB ϕ 12" RING STAND	1	(C)
10	12750	1/4" X 4" X 4" LEG PAD	6	(D)
11	CB090-15ST-9	CHANNEL LEG-POWDER COAT	2	(F)



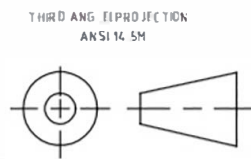
E	HOLES FOR POWDER COATING ADDED TO TWO LEGS COMPONENT TABLE UPDATED	ADH 7/22/11	2254
D	MATERIAL P.N. CORRECTED 12750 WAS SJC886/90ST ϕ 0.56 WAS ϕ 0.63, WEIGHT AND FINISH ADDED	ADH 1/29/10	1995
C	12521 WAS SJC885/90ST-2	ADH 12/7/07	1542
B	TOLERANCE WAS 1% @ 68°F	GWC 3/8/07	
A	ADDED COMPONENT MATERIALS	NVE 4/11/06	
REV	DESCRIPTION	BY / DATE	CCN

DRAWN / DATE	MATERIAL
ADH 6/29/07	
REH 7/18/07	
SHOT WEIGHT:	NOTES:
SHIPPING WEIGHT: 380.00 LBS	
FINISH POWDER COATING, BLACK TILE, 4.0012	

CSI

ChemIndustrial Systems, Inc.
 PO Box 500, Cedarburg, WI 53012
 282-375-8570 • (Fax) 282-375-8559 • info@chemindustrial.com

DESCRIPTION	
CONE BOTTOM STAND FOR ϕ 90 15° TANKS	
SCALE	PART NO.
N.S.	ST90-15-STEEL



ALL DIMENSIONS ARE IN DECIMAL INCHES
 TOLERANCES UNLESS OTHERWISE SPECIFIED

POLYETHYLENE	METAL
\pm 1% @ 68°F	DECIMAL \pm .125" FRACTION \pm 1/4" ANGLE \pm 1°